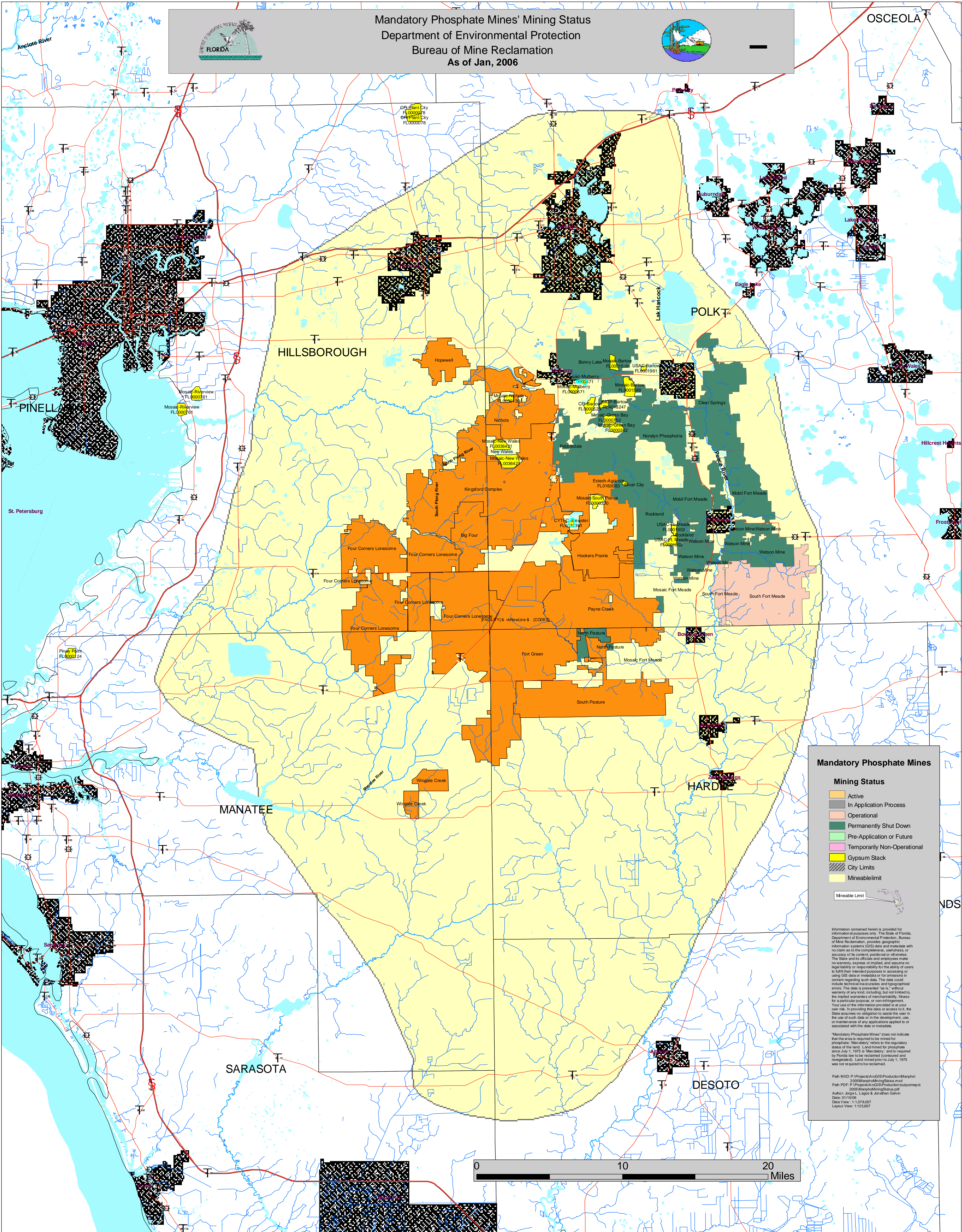


FIGURE 15

Mandatory Phosphate Mines' Mining Status
Department of Environmental Protection
Bureau of Mine Reclamation
As of Jan, 2006



OSCEOLA



Mandatory Phosphate Mines

- Mining Status**
- Active
 - In Application Process
 - Operational
 - Permanently Shut Down
 - Pre-Application or Future
 - Temporarily Non-Operational
 - Gypsum Stack
 - City Limits
 - Mineable Limit

Information contained herein is provided for informational purposes only. The State of Florida, Department of Environmental Protection, Bureau of Mine Reclamation, provides geographic information systems (GIS) data and metadata with no claim as to the completeness, usefulness, or accuracy of its content, position or otherwise. The State and its officials and employees make no warranty, express or implied, and assume no legal liability or responsibility for the ability of users to fulfill their intended purposes in accessing or using GIS data or metadata or for omissions in content regarding such data. The data could include technical inaccuracies and typographical errors. The data is presented "as is," without warranty of any kind, including, but not limited to, the implied warranties of merchantability, fitness for a particular purpose, or non-infringement. Your use of the information provided is at your own risk. In providing this data or access to it, the State assumes no obligation to assist the user in the use of such data or in the development, use, or maintenance of any applications applied to or associated with the data or metadata.

"Mandatory Phosphate Mines" does not indicate that the area is required to be mined for phosphate. "Mandatory" refers to the regulatory status of the land. Land mined for phosphate since July 1, 1975 is "Mandatory" and is required by Florida law to be reclaimed (contoured and revegetated). Land mined prior to July 1, 1975 was not required to be reclaimed.

Path: MXD: P:\Projects\ArcGIS\Production\MapInfo\2005\MapInfoMiningStatus.mxd
 Path: PDF: P:\Projects\ArcGIS\Production\MapInfo\2005\MapInfoMiningStatus.pdf
 Author: Joseph L. Lopez & Jonathan Galvin
 Date: 01/10/06
 Data View: 1:125,000
 Layout View: 1:125,000

